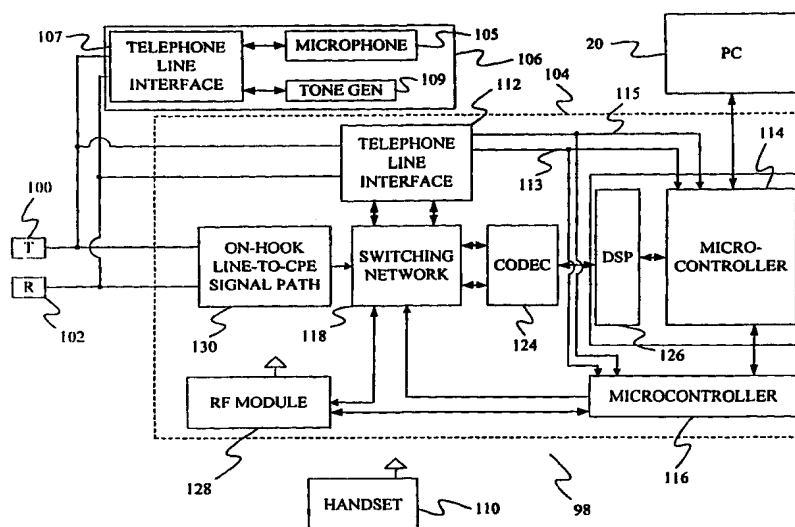




INTERNATIONAL APPLICATION PUBLISHED UNDER THE PATENT COOPERATION TREATY (PCT)

(51) International Patent Classification ⁷ : H04M 3/36	A1	(11) International Publication Number: WO 00/64133 (43) International Publication Date: 26 October 2000 (26.10.00)
(21) International Application Number: PCT/US00/10597 (22) International Filing Date: 20 April 2000 (20.04.00) (30) Priority Data: 09/295,128 20 April 1999 (20.04.99) US (71) Applicant: MICROSOFT CORPORATION [US/US]; One Microsoft Way, Redmond, WA 98052-6399 (US). (72) Inventors: CHILOYAN, John, H.; 15825 Leary Way NE B105, Redmond, WA 98052 (US). ZUVELA, Leonard, D.; 4717 75th Street S.W., Mukilteo, WA 98275 (US). (74) Agents: MAGEE, Theodore, M. et al.; Westman, Champlin & Kelly, P.A., International Centre, Suite 1600, 900 Second Avenue South, Minneapolis, MN 55402-3319 (US).		(81) Designated States: CA, JP, MX, European patent (AT, BE, CH, CY, DE, DK, ES, FI, FR, GB, GR, IE, IT, LU, MC, NL, PT, SE). Published <i>With international search report. Before the expiration of the time limit for amending the claims and to be republished in the event of the receipt of amendments.</i>

(54) Title: METHOD AND APPARATUS FOR LOGGING DTMF PHONE SYMBOLS DIALED FROM AN EXTENSION

**(57) Abstract**

A method and apparatus logs outgoing phone symbols dialed from an extension (106). To log the phone numbers, a switching network (118) is coupled to the phone lines (100, 102) and passes a Dual Tone Multiple Frequency signal from the extension (106) to a CODEC (124). The CODEC (124) converts the analog signal it receives into a series of digital values that are passed to a digital signal processor (126). The digital signal processor (126) decodes the series of digital values into a set of dialed-symbol values indicative of symbols dialed by the extension (106). The dialed-symbol values are packaged by a processing unit interface (114) and transmitted to the processing unit (20) where they are stored in a log database.

FOR THE PURPOSES OF INFORMATION ONLY

Codes used to identify States party to the PCT on the front pages of pamphlets publishing international applications under the PCT.

AL	Albania	ES	Spain	LS	Lesotho	SI	Slovenia
AM	Armenia	FI	Finland	LT	Lithuania	SK	Slovakia
AT	Austria	FR	France	LU	Luxembourg	SN	Senegal
AU	Australia	GA	Gabon	LV	Latvia	SZ	Swaziland
AZ	Azerbaijan	GB	United Kingdom	MC	Monaco	TD	Chad
BA	Bosnia and Herzegovina	GE	Georgia	MD	Republic of Moldova	TG	Togo
BB	Barbados	GH	Ghana	MG	Madagascar	TJ	Tajikistan
BE	Belgium	GN	Guinea	MK	The former Yugoslav Republic of Macedonia	TM	Turkmenistan
BF	Burkina Faso	GR	Greece	ML	Mali	TR	Turkey
BG	Bulgaria	HU	Hungary	MN	Mongolia	TT	Trinidad and Tobago
BJ	Benin	IE	Ireland	MR	Mauritania	UA	Ukraine
BR	Brazil	IL	Israel	MW	Malawi	UG	Uganda
BY	Belarus	IS	Iceland	MX	Mexico	US	United States of America
CA	Canada	IT	Italy	NE	Niger	UZ	Uzbekistan
CF	Central African Republic	JP	Japan	NL	Netherlands	VN	Viet Nam
CG	Congo	KE	Kenya	NO	Norway	YU	Yugoslavia
CH	Switzerland	KG	Kyrgyzstan	NZ	New Zealand	ZW	Zimbabwe
CI	Côte d'Ivoire	KP	Democratic People's Republic of Korea	PL	Poland		
CM	Cameroon	KR	Republic of Korea	PT	Portugal		
CN	China	KZ	Kazakstan	RO	Romania		
CU	Cuba	LC	Saint Lucia	RU	Russian Federation		
CZ	Czech Republic	LI	Liechtenstein	SD	Sudan		
DE	Germany	LK	Sri Lanka	SE	Sweden		
DK	Denmark	LR	Liberia	SG	Singapore		
EE	Estonia						

-1-

METHOD AND APPARATUS FOR LOGGING DTMF PHONE SYMBOLS DIALED FROM AN EXTENSION

BACKGROUND OF THE INVENTION

5 The present invention relates to phone systems. In particular, the present invention relates to phone systems that keep a log of outgoing phone calls.

10 Recently, personal computers (PCs) have been used to manage phone systems for small businesses and homes. These PC-based systems typically use the personal computer as an interface for monitoring or interacting with calls. For example, in one system, the personal computer is used to answer phone calls and record messages from
15 callers. Icons are then displayed on the PC's display unit to represent the recorded messages. If the user wants to play a message, they simply activate the appropriate icon. In other systems, the personal computer has been used to display a log of
20 recent incoming and, in some systems, outgoing calls. In areas where caller identification (Caller ID) is available, incoming call logging systems are even able to store the caller's phone number and in some cases the caller's name.

25 Currently, these individual features are not efficiently integrated into a single PC-based phone system and redundant components are often needed to achieve all of the features described above.

-2-

SUMMARY OF THE INVENTION

A method and apparatus logs outgoing phone symbols dialed from an extension. To log the phone symbols, a switching network is coupled to the phone lines and passes analog Dual Tone Multiple Frequency signals from the extension to a CODEC. The CODEC converts the analog signal it receives into a series of digital values that are passed to a digital signal processor. The digital signal processor decodes the series of digital values into a set of dialed-symbol values indicative of symbols dialed from the extension. The dialed-symbol values are packaged by a processing unit interface and transmitted to a processing unit where they are stored in a log database.

BRIEF DESCRIPTION OF THE DRAWINGS

FIG. 1 is a block diagram of a phone system of the present invention.

FIG. 2 is an example of an audio data packet of the present invention.

FIG. 3 is a general block diagram of the personal computer of Figure 1 and its associated peripherals.

FIG. 4 is a block diagram of the personal computer of FIG. 3 showing in more detail elements that are particularly relevant to the present invention.

FIG. 5 is a flow diagram of a method under the present invention.

-3-

FIG. 6 is a data structure for a state data packet passed between a base station and a personal computer under the present invention.

FIG. 7 is a table showing the layout of a
5 byte of the data structure of FIG. 6.

FIG. 8 is a table showing the layout of a second byte of the data structure of FIG. 6.

FIG. 9 is a data structure for a dialed-symbol packet under the present invention. FIG. 10
10 is an example of a phone log on a display.

DETAILED DESCRIPTION OF ILLUSTRATIVE EMBODIMENTS

Figure 1 is a block diagram of a phone system 98 under the present invention that is connected to phone lines represented by tip line 100 and ring line 102. Tip line 100 and ring line 102
15 are connected to a central office (not shown) operated by a phone company. Within phone system 98, tip line 100 and ring line 102 are connected to a base station 104 and one or more extensions 106.
20 Extension 106 may be connected to any type of customer premises equipment (CPE) such as a phone, a fax machine, an answering machine, or a personal computer. Additional telephone extensions may be attached to tip line 100 and ring line 102 but are
25 not shown in Figure 1 for clarity.

Base station 104 is connected to a personal computer 20 and communicates with a handset 110 either through a cord attached between base station 104 and the handset or through radio waves
30 transmitted between base station 104 and handset 110.

-4-

In one embodiment, the radio waves have a frequency in the range of 900 megahertz, although the particular frequency or frequencies used is not critical and one or more frequencies may be used.

5 Additionally, the phone may operate on a single frequency or at multiple frequencies according to spread spectrum principles. Base station 104 acts as an interface between personal computer 20 and the phone lines of the central office, extension 106, and

10 handset 110. Under this structure, personal computer 20, handset 110, and phone lines 100 and 102 can each be thought of as both an input device providing input to base station 104 and an output device receiving output from base station 104.

15 In its capacity as an interface between these input/output devices, base station 104 translates information provided by one of the input devices into a format acceptable for one of the output devices and routes the information to the

20 appropriate output device. In addition, base station 104 generates original signals based on input signals that it receives.

Incoming calls on telephone lines 100 and 102 begin with a ring signal that includes a series

25 of ring envelopes. This possible ring signal is received by telephone line interface 112 of base station 104, which examines the possible ring signal to determine if it is a valid ring signal.

Telephone line interface 112 examines the

30 first ring envelope to determine if it has the proper

-5-

voltage and frequency to possibly be considered a valid ring signal. If telephone line interface 112 determines that the ring signal may be a valid ring signal, it passes a digital ring detect envelope
5 along a line 113 to microcontrollers 114 and 116 within base station 104. The digital ring detect envelope is a binary signal that has one value for the duration of a detected analog ring envelope and another value at all other times.

10 Microcontrollers 114 and 116 measure the duration of the digital ring envelope to ensure that the minimum duration of the envelope exists. If the envelope exists for a minimum amount of time, the ring signal is considered valid.

15 If a valid ring signal is detected, microcontroller 114 notifies personal computer 20 that a valid ring has been detected. At roughly the same time, microcontroller 116 examines a ring tone enable flag stored in a buffer associated with
20 microcontroller 116. The status of the flag determines whether ring tone generation is enabled in base station 104 at the time the ring-detect signal is received.

If ring tone generation is enabled,
25 microcontroller 116 passes a digital ring generation packet to a Radio Frequency (RF) module 128, which acts as a transmitter by transmitting the packet to handset 110 using radio frequency signals. In this context, microcontroller 116 acts as a ring
30 generator.

-6-

During the ring signal, switching network 118 is configured to connect line-to-cpe path 130 to CODEC 124. In this configuration, when caller identification (caller ID) information is present on
5 lines 100 and 102, it is routed through line-to-cpe path 130 and switching network 118 and into CODEC 124. CODEC 124 converts the analog caller ID information into encoded digital values, which are provided to a digital signal processor 126. The
10 caller ID information is then decoded from the encoded digital values by digital signal processor 126 and the decoded information is stored in a buffer until it is transmitted to personal computer 20 by microcontroller 114.

15 The caller ID information is used by personal computer 20 to generate a log of incoming calls and to announce and/or display who is calling. If there is no caller ID information on lines 100 and 102, computer 20 logs the time and duration of the
20 call but does not log any caller information.

If after ringing begins, a user activates handset 110 to take the call, switching network 118 is configured so that a communication path is created that extends from phone lines 100 and 102, through
25 telephone line interface 112, switching network 118, and RF module 128, to handset 110. This allows the user to converse with the party on the other end of the line.

If the call is answered from an extension
30 phone, by taking the extension phone "off-hook", a

-7-

speaker and microphone assembly 105 in the extension phone are connected to the phone lines through a telephone line interface 107. Note that after a call has been answered on either the extension phone or
5 the handset, another connection can be made to the call by taking either the extension CPE or the handset off-hook.

In one embodiment, if a user does not answer the call after a predetermined number of ring
10 envelopes on the ring signal, the call is routed to answering machine software stored in personal computer 20. This routing sends voice signals from phone lines 100 and 102, through telephone line interface 112, and switching network 118, to CODEC
15 124, where the analog signals are converted into encoded digital signals. The encoded digital signals are then provided to digital signal processor 126, which decodes the encoded digital signals into a set of digital values that are buffered until they are
20 packaged by microcontroller 114 to be sent to personal computer 20.

In this configuration, personal computer 20 can also decode Dual Tone Multiple Frequency (DTMF) signals that are created when the caller dials one or
25 more symbols on their phone. Under the Dual Tone Multiple Frequency system, each dialed symbol generates an analog signal consisting of two different frequencies. Table 1 below shows the two signal frequencies created for each symbol, with low
30 frequency signals shown along the vertical border and

-8-

high frequency signals shown along the horizontal border.

DTMF	1209 Hz	1336 Hz	1477 Hz	1633 Hz
697 Hz	1	2	3	A
770 Hz	4	5	6	B
852 Hz	7	8	9	C
941 Hz	*	0	#	D

Table 1

5

The DTMF signals and any speech signals from the caller are routed from microcontroller 114 to personal computer 20 using an audio packet 150 of FIG. 2. Audio packet 150 includes a header byte that is divided into a block number nibble 154 and an audio packet identifier nibble 152. Block number nibble 154 is used to identify the order of individual audio packets that together form a complete audio signal. Audio packet identifier nibble 152 identifies this packet as containing audio data instead of command data.

After audio packet identifier nibble 152, audio data packet 150 includes twelve bytes of audio data, which are denoted as audio payload 156. In one embodiment, an eight-bit encoding format is used to encode the audio data where the most significant bit is a polarity bit, the next three bits represents a

-9-

segment code and the four remaining bits represent a quantization code

The last byte of audio packet 150 is the same as the first byte, except that the position of the nibbles has been reversed.

FIG. 3 provides a general block diagram of computer 20 and related devices associated with computer 20. FIG. 3 and the related discussion are intended to provide a brief, general description of a suitable computing environment in which the invention may be implemented. Although not required, the invention will be described, at least in part, in the general context of computer-executable instructions, such as program modules, being executed by a personal computer. Generally, program modules include routine programs, objects, components, data structures, etc. that perform particular tasks or implement particular abstract data types. Moreover, those skilled in the art will appreciate that the invention may be practiced with other computer system configurations, including hand-held devices, multiprocessor systems, microprocessor-based or programmable consumer electronics, network PCs, minicomputers, mainframe computers, and the like. The invention may also be practiced in distributed computing environments where tasks are performed by remote processing devices that are linked through a communications network. In a distributed computing environment, program modules may be located in both local and remote memory storage devices.

-10-

With reference to FIG. 3, an exemplary system for implementing the invention includes a general purpose computing device in the form of a conventional personal computer 20, including a processing unit (CPU) 21, a system memory 22, and a system bus 23 that couples various system components including the system memory 22 to the processing unit 21. The system bus 23 may be any of several types of bus structures including a memory bus or memory controller, a peripheral bus, and a local bus using any of a variety of bus architectures. The system memory 22 includes read only memory (ROM) 24 and random access memory (RAM) 25. A basic input/output (BIOS) 26, containing the basic routine that helps to transfer information between elements within the personal computer 20, such as during start-up, is stored in ROM 24, which could also be FLASH BIOS. The personal computer 20 further includes a hard disk drive 27 for reading from and writing to a hard disk (not shown), a magnetic disk drive 28 for reading from or writing to removable magnetic disk 29, and an optical disk drive 30 for reading from or writing to a removable optical disk 31 such as a CD ROM or other optical media. The hard disk drive 27, magnetic disk drive 28, and optical disk drive 30 are connected to the system bus 23 by a hard disk drive interface 32, magnetic disk drive interface 33, and an optical drive interface 34, respectively. The drives and the associated computer-readable media provide nonvolatile storage of computer readable

-11-

instructions, data structures, program modules and other data for the personal computer 20.

Although the exemplary environment described herein employs the hard disk, the removable
5 magnetic disk 29 and the removable optical disk 31, it should be appreciated by those skilled in the art that other types of computer readable media which can store data that is accessible by a computer, such as magnetic cassettes, flash memory cards, digital video
10 disks, Bernoulli cartridges, random access memories (RAMs), read only memory (ROM), and the like, may also be used in the exemplary operating environment.

A number of program modules may be stored on the hard disk, magnetic disk 29, optical disk 31,
15 ROM 24 or RAM 25, including an operating system 35, one or more application programs 36, other program modules 37, and program data 38. A user may enter commands and information into the personal computer 20 through local input devices such as a keyboard 40,
20 pointing device 42 and a microphone 43. Other input devices (not shown) may include a joystick, game pad, satellite dish, scanner, or the like. These and other input devices are often connected to the processing unit 21 through a serial port interface 46
25 that is coupled to the system bus 23, but may be connected by other interfaces, such as a sound card, a parallel port, a game port or a universal serial bus (USB). A monitor 47 or other type of display device is also connected to the system bus 23 via an
30 interface, such as a video adapter 48. In addition

-12-

to the monitor 47, personal computers may typically include other peripheral output devices, such as a speaker 45 and printers (not shown).

The personal computer 20 may operate in a
5 networked environment using logic connections to one or more remote computers, such as a remote computer 49. The remote computer 49 may be another personal computer, a hand-held device, a server, a router, a network PC, a peer device or other network node, and
10 typically includes many or all of the elements described above relative to the personal computer 20, although only a memory storage device 50 has been illustrated in FIG. 3. The logic connections depicted in FIG. 3 include a local area network (LAN)
15 51 and a wide area network (WAN) 52. Such networking environments are commonplace in offices, enterprise-wide computer network Intranets, and the Internet.

When used in a LAN networking environment, the personal computer 20 is connected to the local
20 area network 51 through a network interface or adapter 53. When used in a WAN networking environment, the personal computer 20 typically includes a modem 54 or other means for establishing communications over the wide area network 52, such as
25 the Internet. The modem 54, which may be internal or external, is connected to the system bus 23 via the serial port interface 46. In a network environment, program modules depicted relative to the personal computer 20, or portions thereof, may be stored in
30 the remote memory storage devices. It will be

-13-

appreciated that the network connections shown are exemplary and other means of establishing a communications link between the computers may be used. For example, a wireless communication link may
5 be established between one or more portions of the network.

FIG. 4 provides a more detailed block diagram of the elements of computer 20 most germane to the present invention including those useful in
10 describing the operation of computer 20 when it receives an audio packet from base 104 of FIG. 1 while answering machine software is active on computer 20. In FIG. 4, an audio packet such as packet 150 of FIG. 2 is first received serially by
15 serial port 46. Although a simple serial port is shown in the embodiment of FIG. 4, other types of ports may be used such as a Universal Serial Bus port. Serial port 46 converts the serial packet into a series of parallel packets that are forwarded to a
20 base station interface 180, which strips the command and audio information from the data packet. Base station interface 180 then forwards the command and the audio information to a phone controller 182.

Phone controller 182 is the main controller
25 for the personal computer portion of the phone system. Phone controller 182 monitors the current state of the phone system and routes data packets from base station 104 to appropriate software units on personal computer 20.

-14-

When phone controller 182 receives an audio data packet, such as data packet 150 of FIG. 2, while the phone system is in an answering machine mode, phone controller 182 routes the audio data to an answering machine controller 184. Answering machine controller 184 includes a DTMF detection filter that detects and decodes any DTMF data present in the audio data to produce one or more dialed-symbol values that represent the symbols that were dialed to create the DTMF signals. Answering machine controller 184 also monitors the current state of the answering machine including whether it is currently playing a message, has just finished playing a message, has just deleted a message and so forth. Based on the current state of the answering machine, phone controller 182 performs one or more functions as a result of the recovered dialed-symbol values. For example, if the user has just finished listening to a message and they press key "5", answering machine controller 184 will repeat the message.

The phone system of the present invention also permits logging of outgoing calls. In particular, the present invention logs phone numbers dialed from an extension. A method of logging such numbers is described below with reference to the flow diagram of FIG. 5 and the block diagrams of FIGS. 1 and 4.

When an extension CPE is taken "off-hook" at an initial step 220 of FIG. 5, telephone line interface 112 of FIG. 1 detects a change in the

-15-

signal on phone lines 100 and 102. Based on this change, telephone line interface 112 sends an extension off-hook signal to microcontroller 116 at step 222. In the embodiment of FIG. 1 the extension
5 off-hook signal is passed to microcontroller 116 along line 115. Microcontroller 116 contains an algorithm to track the length of time the CPE is in a particular state. If the extension CPE remains off-hook for a long enough time to distinguish the event
10 from noise on the line, microcontroller 116 considers the off-hook signal to be valid.

Upon measuring a valid off-hook signal at step 224, microcontroller 116 establishes a communication path from phone lines 100 and 102,
15 through line-to-cpe signal path 130, switching network 118, to CODEC 124. If base station 104 is connected to an active personal computer 20, microcontroller 116 also conveys the off-hook status of the extension to personal computer 20 via
20 microcontroller 114 using a state data packet such as data packet 250 of FIG. 6.

Data packet 250 conveys the current state of the phone system to personal computer 20. Header bytes 252 and 254 designate data packet 250 as a
25 packet that contains state data. Bytes 256 and 260 each contain sets of binary flags that convey the current state of different portions of the phone system. These binary flags are described further below. Byte 258 of data packet 250 contains the
30 current line connections through switching network

-16-

118 as well as the on-hook/off-hook status of base station 104 and handset 110. Bytes 266 and 268 form a sixteen-bit checksum value and the remaining bytes of data packet 250 are reserved.

5 FIG. 7 is a table showing the layout of state byte 256 of FIG. 6. The two least significant bits 276 and 278 indicate whether any extension connected to the phone system is off-hook. In one embodiment, these two bits have three different
10 values for conveying the on-hook/off-hook status of an extension. A value of 00 binary indicates that all of the extensions are on-hook; a value of 01 indicates that one or more of the extensions is off-hook; and a value of 10 indicates that the base
15 station cannot tell if an extension is off-hook because the base station is off-hook. The remaining bits of byte 256 can be used to convey the status of other aspects of the phone system.

 FIG. 8 is a table showing the layout of
20 byte 260 of FIG. 6. In the embodiment of FIG. 8, the least significant bits 280 and 282 of byte 258 convey the current hook status of a phone on the far-end of phone lines 100 and 102 of FIG. 1. A value of 00 indicates that the phone on the far-end is off-hook
25 and a value of 01 indicates that the phone on the far-end is on-hook. This information can be used to indicate when someone calling the phone system has disconnected.

 Returning to the flow diagram of FIG. 5, at
30 step 226 the user who took the extension off-hook

-17-

begins dialing using the extension phone's key pad. In response to the key presses, a tone generator 109 in extension phone 106 of FIG. 1 generates the appropriate DTMF signals according to the
5 relationships between keys and tones found in Table 1 above.

The DTMF signals created by tone generator 109 pass out along phone lines 100 and 102 to the phone company's central office, which uses the DTMF
10 signals to connect the call. At the same time, because of the communication path established at step 224 above, CODEC 124 and digital signal processor 126 receive and decode the DTMF signals into key values at a step 228. Specifically, CODEC 124 converts the
15 analog DTMF signals into digital values that are passed to digital signal processor 126. Digital signal processor 126 includes a digital filter that filter's and decodes the DTMF signals to generate a set of dialed-symbol values. The set of dialed-
20 symbol values are then stored in a buffer associated with microcontroller 116 via microcontroller 114. If base station 104 is not attached to an active personal computer, the dialed symbols remain in the buffer until a connection to a computer is made. In
25 many embodiments, base station 104 can store multiple sets of dialed symbols to allow a log of dialed symbols to be stored on the base station for later transfer to a personal computer.

At step 230, if base station 104 is
30 connected to an active personal computer 20, the

-18-

dialed-symbol values stored at step 228 are retrieved by microcontroller 116 and sent to personal computer 20 via microcontroller 114 in a dialed-symbol data packet. An example of a dialed-symbol data packet 450 is shown in FIG. 9. Header byte 452 indicates that this is a command data packet and header byte 454 indicates that this is a data packet that includes dialed symbols. The next ten bytes, from byte 456 to byte 458, contain the symbols that were dialed. In the embodiment of FIG. 9, each of these bytes can contain up to two of the dialed symbols. When this occurs, the first nibble represents one of the dialed symbols and the second nibble represents a second dialed symbol. In this embodiment, dialed numbers "1" through "9" are represented by hex values 0X1 through 0X9. The "0" symbol, the "*" symbol and the "#" symbol are represented by hex values 0XA, 0XB, and 0XC, respectively. In some embodiments, an extended set of symbols is supported that are represented by an extension nibble followed by a symbol-value nibble. Such full-byte symbols can occupy a single byte of the ten bytes between byte 456 and byte 458, or may extend across two consecutive bytes. Bytes 460 and 462 represent the most significant eight bits and the least significant eight bits, respectively, of a sixteen bit checksum value, which is the two's complement of the sum of all of the bytes in data packet 450, excluding the check sum bytes.

-19-

At step 232 of FIG. 5, personal computer 20 uses the dialed number in data packet 450 to search through an address book database 186 shown in FIG. 4. In one embodiment, data packet 450 is sent serially
5 to serial port 46, which converts the serial data into a set of parallel data values. The dialed numbers and the header identifying the data packet as containing dialed numbers are stripped from the data packet by base station interface 180, which forwards
10 this information to phone controller 182. Phone controller 182 then accesses address book database 186 in an attempt to locate a record with the dialed phone numbers. If it locates such a record, it retrieves the name associated with the numbers.

15 At step 234 of FIG. 5, personal computer 20 stores the dialed numbers, the associated name if it finds a record in address book database 186, and the start date and time of the phone call in a log database 190 of FIG. 4.

20 When the phone call is complete, the extension will be placed back on-hook. At step 236, telephone line interface 112 detects that the extension is back on-hook and relays this information to microcontroller 116 through line 115. At step
25 238, microcontroller 116, via microcontroller 114, sends personal computer 20 another state packet that is similar to state packet 250 of FIG. 6. In the state packet, microcontroller 116 indicates that all of the extensions are on-hook and that the far-end

-20-

phone is on-hook using state bits 276, 278, 280, and 282 of FIGS. 7 and 8.

At step 240, phone controller 182 of FIG. 4 receives the state packet and based on the fact that
5 the call has ended, retrieves the start time of the call from log database 190. Phone controller 182 then calculates the duration of the phone call based on the start time and the time at which the call was terminated. The call duration is then stored in log
10 database 190 for this call.

The information stored in log database 192 can be viewed on monitor 47 and/or printed on one or more printers associated with computer 20. In FIG. 4, these display functions are controlled by a log
15 display controller 188 that communicates with an operating system 35 and log database 190. The user may navigate through the display using an input device that passes commands to an input device interface 192 that is connected to operating system
20 35. Operating system 35 then forwards these input device messages to log display controller 188.

An example of an interactive display 500 generated by log display controller 188 is shown in FIG. 10. Entries 512, 514, and 516, each so logged
25 information for an outgoing call. In entry 512, the dialed number was not found in the address book database, so a value of "UNKNOWN" was entered for the name of the person called. In entries 514, and 516, the number was found in address book database 186,
30 and the corresponding names were stored in log

-21-

database 190. In alternative embodiments, an additional field is present in log display 500 to indicate whether the outgoing call was made from the base station or from an extension.

5 Although the answering machine and logging functionality have been discussed with reference to a personal computer, those skilled in the art will understand that this functionality may be achieved in the base station by adding appropriate components to
10 the base station. In this context, the personal computer can be viewed generically as a processing unit and microcontrollers 114 and 116 can be viewed as interfaces to the processing unit.

 In addition, although specific layouts have
15 been described for various data packets, other layouts are possible. In addition, the size of the fields in the data packets or the types of fields in the data packets may be changed within the scope of the present invention.

20 Although the present invention has been described with reference to particular embodiments, workers skilled in the art will recognize that changes may be made in form and detail without departing from the spirit and scope of the invention.

-22-

WHAT IS CLAIMED IS:

1. An apparatus for logging outgoing phone numbers dialed from an extension connected to a phone line, the apparatus comprising:

a switching network coupled to the phone line;

a CODEC coupled to the switching network and capable of converting an analog Dual Tone Multiple Frequency signal placed on the phone line by the extension into a series of digital values;

a digital signal processor coupled to the CODEC for decoding the series of digital values into a series of dialed-symbol values representing the symbols dialed by the extension to generate the Dual Tone Multiple Frequency signal;

a processing unit interface coupled to the digital signal processor and capable of packaging the series of dialed-symbol values into a data packet; and

a processing unit coupled to the processing unit interface and capable of receiving the data packet from the interface, retrieving the dialed symbol values from the data packet and storing the dialed-symbol values in a log database.

-23-

2. The apparatus of claim 1 wherein the processing unit comprises a personal computer.

3. The apparatus of claim 2 further comprising a telephone line interface coupled between the telephone line and the processing unit interface and capable of detecting when the extension is off-hook and of sending an off-hook signal to the processing unit interface that is indicative of the extension being off-hook.

4. The apparatus of claim 3 wherein the personal computer further comprises computer readable instructions for performing answering machine functions.

5. The apparatus of claim 4 wherein the computer readable instructions for performing answering machine functions comprise instructions for detecting and decoding digital values representing an audio Dual Tone Multiple Frequency signal into dialed-symbol values.

6. The apparatus of claim 4 wherein the processing unit interface is a microcontroller.

7. The apparatus of claim 6 wherein the switching network, CODEC, digital signal processor, and microcontroller form at least part of a base

-24-

station and wherein the apparatus further comprises a handset in communication with the base station.

8. A method for logging outgoing phone calls made on a phone line from an extension, the method comprising:

- (a) connecting a CODEC to the phone line;
- (b) converting analog Dual Tone Multiple Frequency signals placed on the phone line by the extension into a series of digital values;
- (c) converting the series of digital values into a set of dialed-symbol values representative of symbols dialed by the extension to generate the Dual Tone Multiple Frequency signal; and
- (d) storing the dialed-symbol values in a log memory location.

9. The method of claim 8 further comprising before connecting the CODEC to the phone line, detecting that the extension is off-hook and wherein the step of connecting the CODEC to the phone line is performed in response to the extension being off-hook.

10. The method of claim 8 wherein storing the dialed-symbol values in a log memory location comprises:

-25-

- (d)(i) packaging the dialed-symbol values in a data packet;
- (d)(ii) sending the data packet to a processing unit;
- (d)(iii) unpackaging the dialed-symbol values from the data packet at the processing unit; and
- (d)(iv) storing the dialed-symbol values in a log database.

11. The method of claim 10 wherein the processing unit comprises a personal computer.

12. A computer-readable medium having stored thereon a data structure comprising:

- (a) a first data field indicating that the data structure includes command data;
- (b) a second data field containing a command value indicating that the data structure contains dialed-symbol values indicative of a phone number dialed by a phone;
- (c) third, fourth, fifth, sixth, seventh, eighth, ninth, tenth, eleventh and twelfth data fields designated to contain dialed-symbol values;
- (d) a checksum high field containing eight most significant bits of a sixteen bit value representing the sum of all of

-26-

the fields between the first data field and the twelfth data field; and
(e) a checksum low field containing eight least significant bits of the sixteen bit value.

13. The data structure of claim 12 wherein the third data field comprises two dialed-symbol values.

14. The data structure of claim 12 wherein each data field is one byte long.

1/7

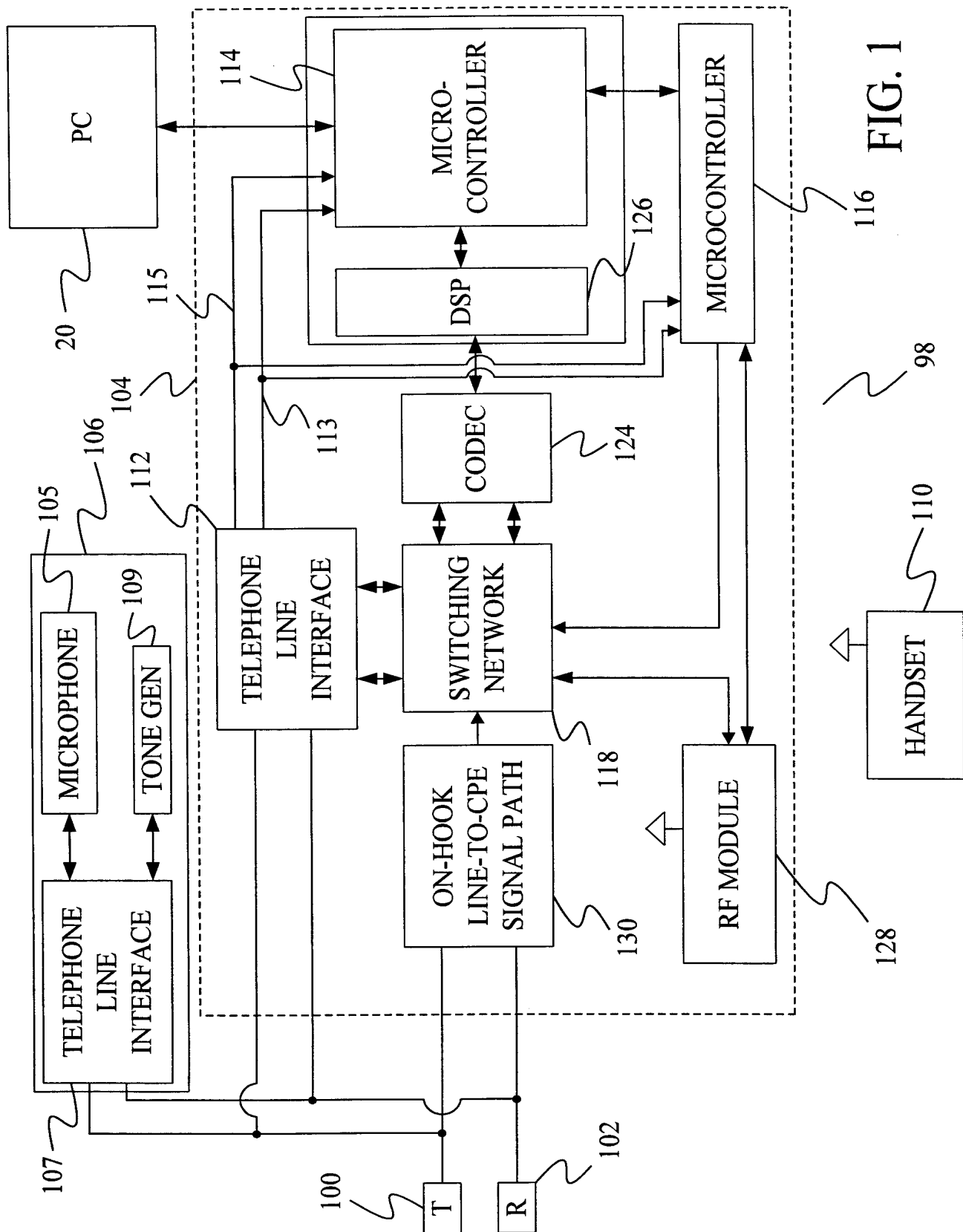


FIG. 1

2/7

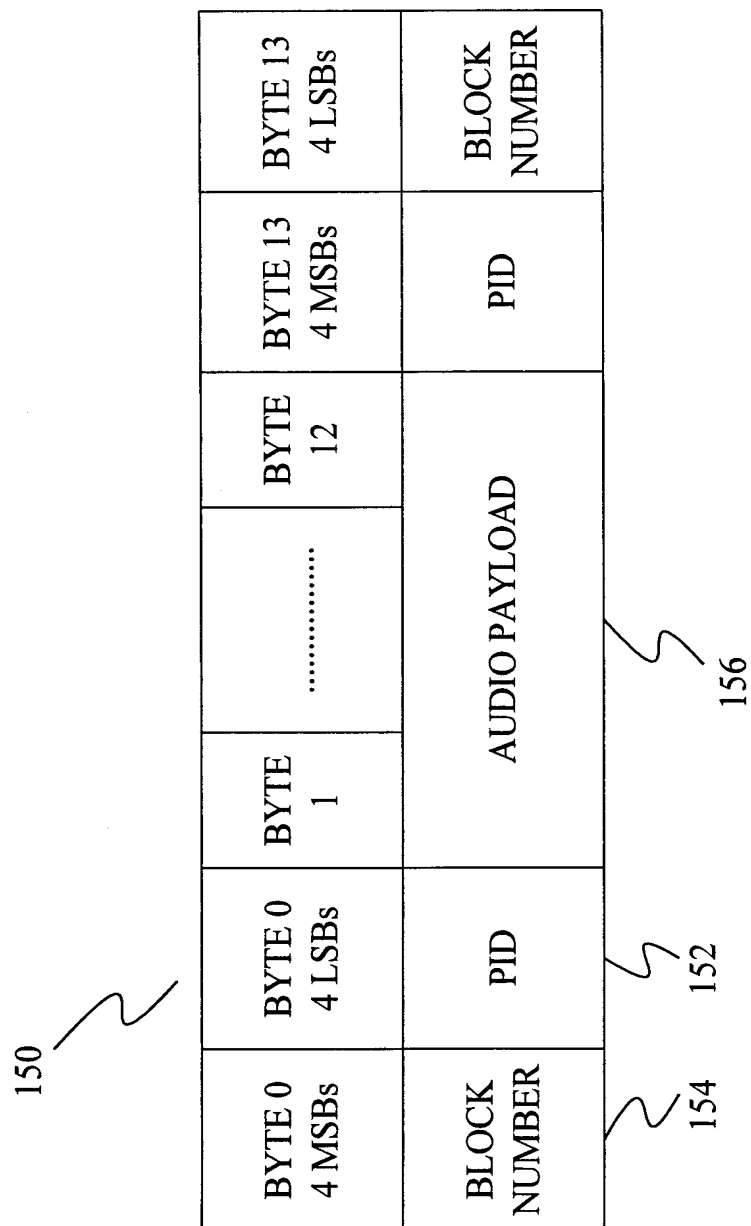
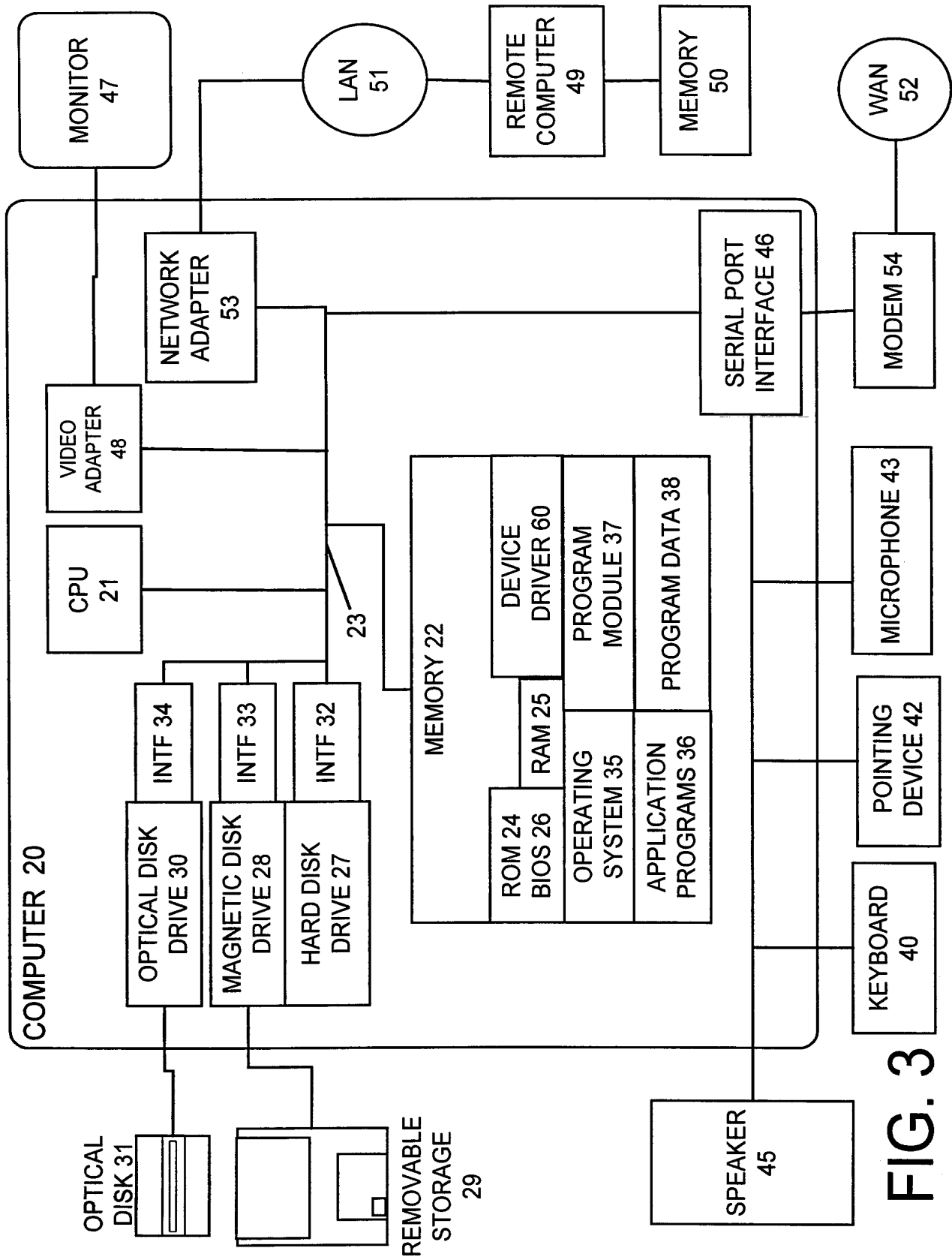


FIG. 2

3/7

**FIG. 3**

4/7

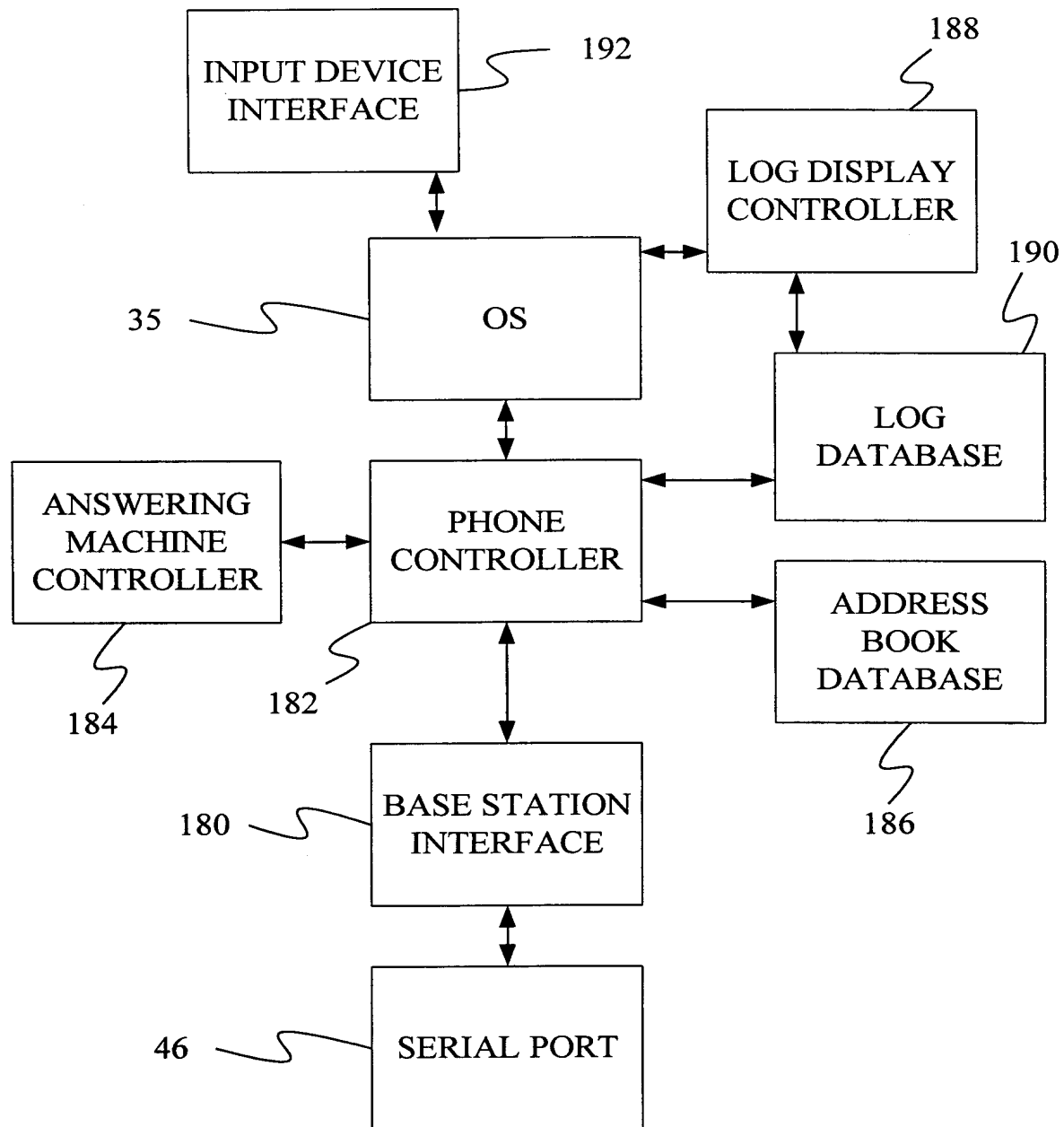


FIG. 4

5/7

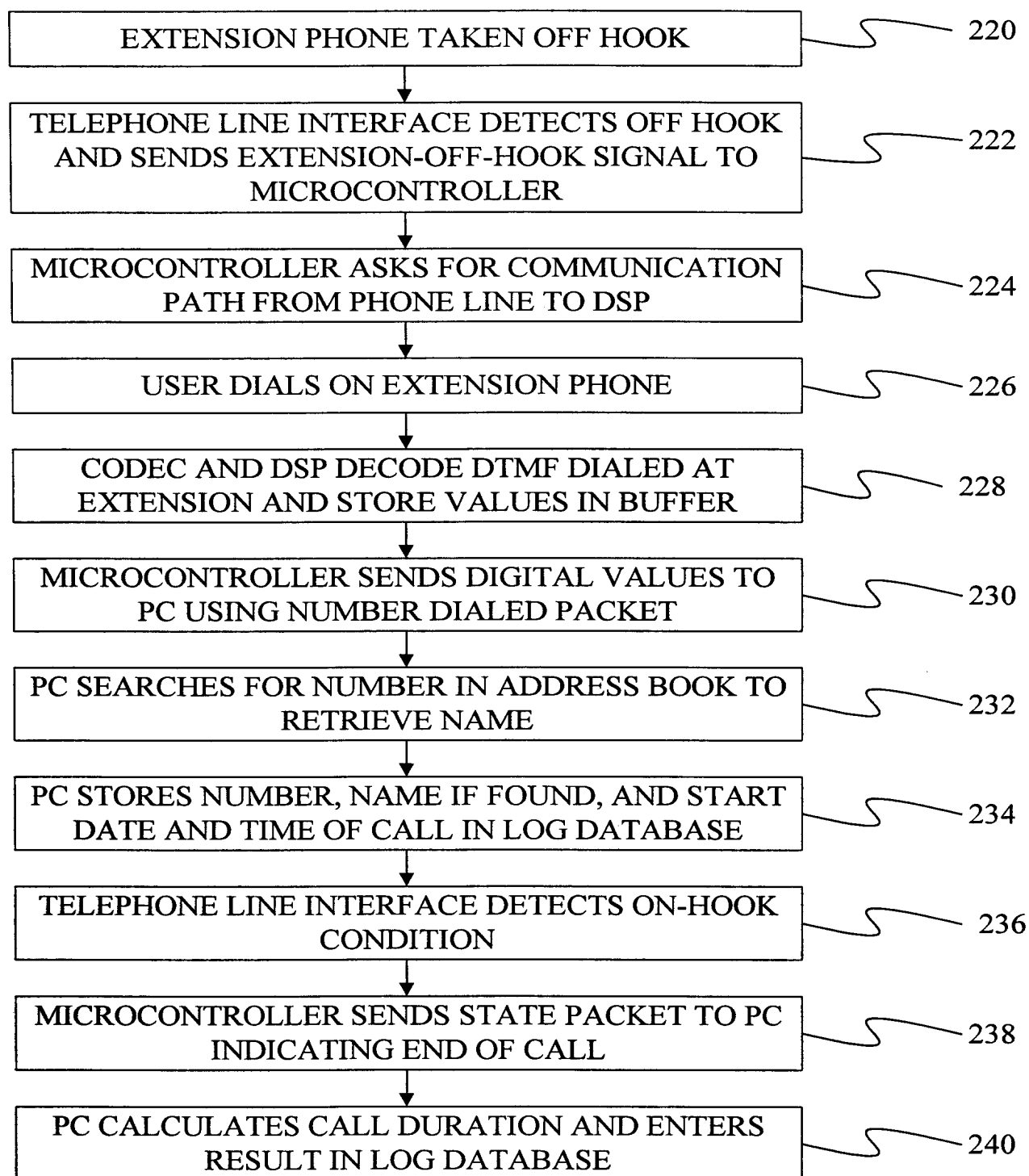


FIG. 5

PACKET INDEX	FIELD NAME	
0X00	PNUM & PID	252
0X01	STATE COMMAND	254
0X02	STATEFLAGS1	256
0X03	SYSTEMSTATE	258
0X04	STATEFLAGS2	260
0X05	RESERVED	
0X06	RESERVED	
0X07	RESERVED	
0X08	RESERVED	
0X09	RESERVED	
0X0A	RESERVED	
0X0B	RESERVED	
0X0C	CHECKSUM	266
0X0D	CHECKSUM	268

FIG. 6

BIT POSITION										DESCRIPTION
7	6	5	4	3	2	1	0			
						X	X	EXTENSION OFF HOOK		
				X	X			OTHER STATE INFO		
			X					OTHER STATE INFO		
		X						OTHER STATE INFO		
X	X							OTHER STATE INFO		

FIG. 7

BIT POSITION							DESCRIPTION	
7	6	5	4	3	2	1	0	
						X	X	FAR END HOOK STATE
					X			OTHER STATE INFO
			X	X				OTHER STATE INFO
		X						OTHER STATE INFO
X	X							OTHER STATE INFO

FIG. 8

7/7

PACKET INDEX	FIELD NAME
0X00	PNUM & PID
0X01	DIAL COMMAND
0X02	DIALSTRING1
0X03	DIALSTRING2
0X04	DIALSTRING3
0X05	DIALSTRING4
0X06	DIALSTRING5
0X07	DIALSTRING6
0X08	DIALSTRING7
0X09	DIALSTRING8
0X0A	DIALSTRING9
0X0B	DIALSTRING10
0X0C	CHECKSUM
0X0D	CHECKSUM

450

452

454

456

458

460

462

FIG. 9

500

512

514

516

Call History				
<div> <div>Call Back</div> <div>Caller Details</div> <div>Delete</div> </div>				
Type	Name	Number	Date/Time	Length
In	Mrs. Horton	(425)555-0103	6/3/98 12:02:19..	0 min. 40 sec.
Out	Unknown	(425)555-9909	6/2/98 1:30:12 PM	0 min. 56 sec.
In	Private	(425)555-0044	6/1/98 7:52:55 PM	0 min. 12 sec.
In	Len Zuvela	(425)555-1004	6/1/98 6:30:22 PM	5 min. 43 sec.
Out	Len Zuvela	(425)555-1004	6/1/98 6:02:34 PM	0 min. 30 sec.
Out	John Chiloyan	(425)555-8888	6/1/98 5:30:23 PM	7 min. 23 sec.

FIG. 10

INTERNATIONAL SEARCH REPORT

International Application No

PCT/US 00/10597

A. CLASSIFICATION OF SUBJECT MATTER

IPC 7 H04M3/36

According to International Patent Classification (IPC) or to both national classification and IPC

B. FIELDS SEARCHED

Minimum documentation searched (classification system followed by classification symbols)

IPC 7 H04M

Documentation searched other than minimum documentation to the extent that such documents are included in the fields searched

Electronic data base consulted during the international search (name of data base and, where practical, search terms used)

EPO-Internal, WPI Data, PAJ, INSPEC, IBM-TDB, COMPENDEX

C. DOCUMENTS CONSIDERED TO BE RELEVANT

Category *	Citation of document, with indication, where appropriate, of the relevant passages	Relevant to claim No.
X	WO 98 39941 A (ERICSSON GE MOBILE INC) 11 September 1998 (1998-09-11)	1,2,8
Y	abstract; figure 1 page 2, line 9 - line 36 page 8, line 32 -page 9, line 24 ---	3-7,9
Y	US 5 535 265 A (SUWANDHAPUTRA JOHANNES H) 9 July 1996 (1996-07-09) abstract; figure 2 ---	3-7,9
X	WO 96 02996 A (ANDERSON HOWARD M) 1 February 1996 (1996-02-01) abstract	1,2,8
A	page 2, line 1 -page 4, line 5A ---	12
	-/--	

☒ Further documents are listed in the continuation of box C.

☒ Patent family members are listed in annex.

* Special categories of cited documents :

- "A" document defining the general state of the art which is not considered to be of particular relevance
- "E" earlier document but published on or after the international filing date
- "L" document which may throw doubts on priority claim(s) or which is cited to establish the publication date of another citation or other special reason (as specified)
- "O" document referring to an oral disclosure, use, exhibition or other means
- "P" document published prior to the international filing date but later than the priority date claimed

- "T" later document published after the international filing date or priority date and not in conflict with the application but cited to understand the principle or theory underlying the invention
- "X" document of particular relevance; the claimed invention cannot be considered novel or cannot be considered to involve an inventive step when the document is taken alone
- "Y" document of particular relevance; the claimed invention cannot be considered to involve an inventive step when the document is combined with one or more other such documents, such combination being obvious to a person skilled in the art.
- "&" document member of the same patent family

Date of the actual completion of the international search

4 August 2000

Date of mailing of the international search report

14/08/2000

Name and mailing address of the ISA

European Patent Office, P.B. 5818 Patentlaan 2
NL - 2280 HV Rijswijk
Tel. (+31-70) 340-2040, Tx. 31 651 epo nl,
Fax: (+31-70) 340-3016

Authorized officer

Willems, B

INTERNATIONAL SEARCH REPORT

International Application No
PCT/US 00/10597

C.(Continuation) DOCUMENTS CONSIDERED TO BE RELEVANT		
Category *	Citation of document, with indication, where appropriate, of the relevant passages	Relevant to claim No.
X	<p>EP 0 510 412 A (ROLM SYSTEMS) 28 October 1992 (1992-10-28) column 2, line 32 -column 3, line 13 column 5, line 50 -column 6, line 34; figure 3</p> <p style="text-align: center;">-----</p>	1,2,8

INTERNATIONAL SEARCH REPORT

Information on patent family members

Inter. Patent Application No

PCT/US 00/10597

Patent document cited in search report	Publication date	Patent family member(s)	Publication date
WO 9839941 A	11-09-1998	AU 6540498 A EP 0972416 A NO 994325 A	22-09-1998 19-01-2000 08-11-1999
US 5535265 A	09-07-1996	AU 679582 B AU 8019894 A CA 2176110 A EP 0729684 A WO 9514344 A	03-07-1997 06-06-1995 26-05-1995 04-09-1996 26-05-1995
WO 9602996 A	01-02-1996	AU 2971295 A	16-02-1996
EP 0510412 A	28-10-1992	US 5241586 A DE 69220534 D DE 69220534 T	31-08-1993 31-07-1997 18-12-1997